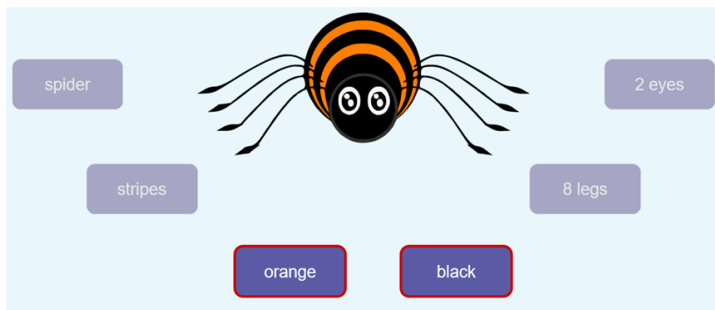




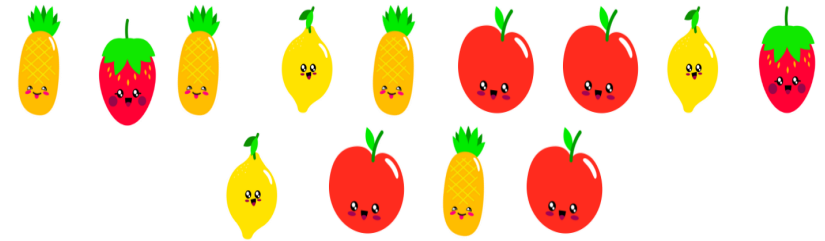
## Key Vocabulary

|                    |   |
|--------------------|---|
| <b>Information</b> | <b>Information</b> is what we can understand from looking at <b>data</b> .    |
| <b>Data</b>        | Data can be numbers, words or figures.  |
| <b>Search</b>      | To find something by looking on the internet                                  |
| <b>Label</b>       | Labels can be used to place objects into <b>groups</b>                        |
| <b>Group</b>       | The same objects can be put into groups, depending on their <b>properties</b> |
| <b>Properties</b>  | Objects have different features that we can choose to <b>label</b> them by.   |

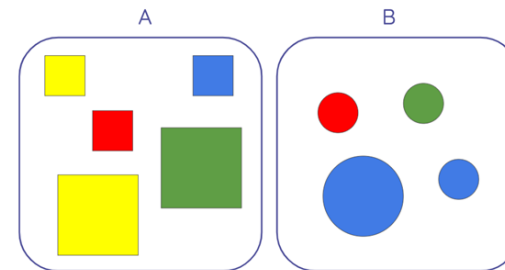
## Labelling



## Grouping



We can answer questions by looking at the objects and then sort them into groups. How many objects are **red**?



Squares

Circles

Computers can be used to count and

**group.**

|                      |   |          |
|----------------------|---|----------|
| <b>In school</b>     |   |          |
| Ben                  | ✓ | Count: 5 |
| Craig                | ✓ |          |
| Harriet              | ✓ |          |
| Ikram                | ✓ |          |
| Rob                  | ✓ |          |
| <b>Not in school</b> |   |          |
| Sam                  | ✗ | Count: 2 |
| Bonnie               | ✗ |          |

**Comparing** is when we look at what is similar (the same) and what is different. You can compare objects or groups of objects by looking at the **properties**.