

Art Into the Woods– Pop Art



Our Learning from Reception

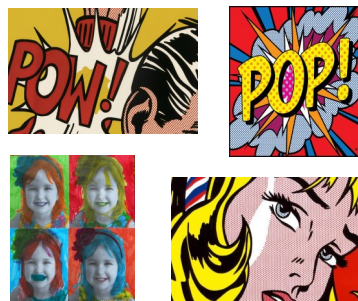
Explore, use and refine a variety of artistic effects to express their ideas and feelings.

Return to and build on their previous learning, refining ideas and developing their ability to represent them.

Create collaboratively sharing ideas, resources and skills.

Our Questions

- Who was Roy Lichtenstein?
- Who was Andy Warhol?
- What were they famous for?



Key Knowledge

What is Pop Art?	Art about 'popular' things such as TV, celebrities, fast food, pop music and cartoons.
Who was Roy Lichtenstein?	Roy Lichtenstein was an American Pop Artist. He became famous in the 1960's for his bright and bold paintings of comic strip cartoons as well as his paintings of everyday objects.
Who was Andy Warhol?	Andy Warhol was an American visual artist, film director, producer, and leading figure in the pop art movement.
How can you create Pop Art?	Pop Art consists of bright colours, bold lines and dots. Use these techniques together to create a Pop Art piece.

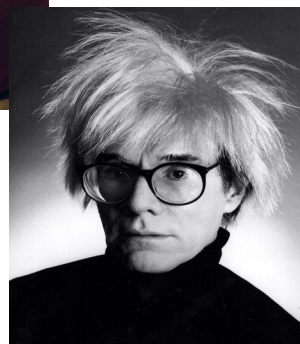
Key Vocabulary

Art	An expression of emotion.
dots	A small round mark.
line	A long, narrow mark or band.
colour	The pigmentation of an object.
expression	The look on someone's face that conveys a particular emotion.

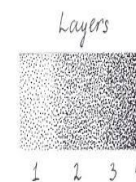
Roy Lichtenstein



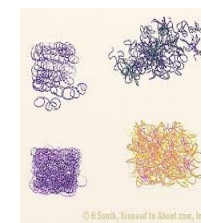
Andy Warhol



Stippling



Scumbling



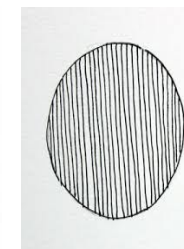
Blending



Back and forth



Hatching



Cross Hatching

